

# RUTGERS

THE STATE UNIVERSITY  
OF NEW JERSEY

# Children's System of Care Overview

Children's System of Care-Training and Technical Assistance



STATE OF NEW JERSEY  
DEPARTMENT OF CHILDREN AND FAMILIES



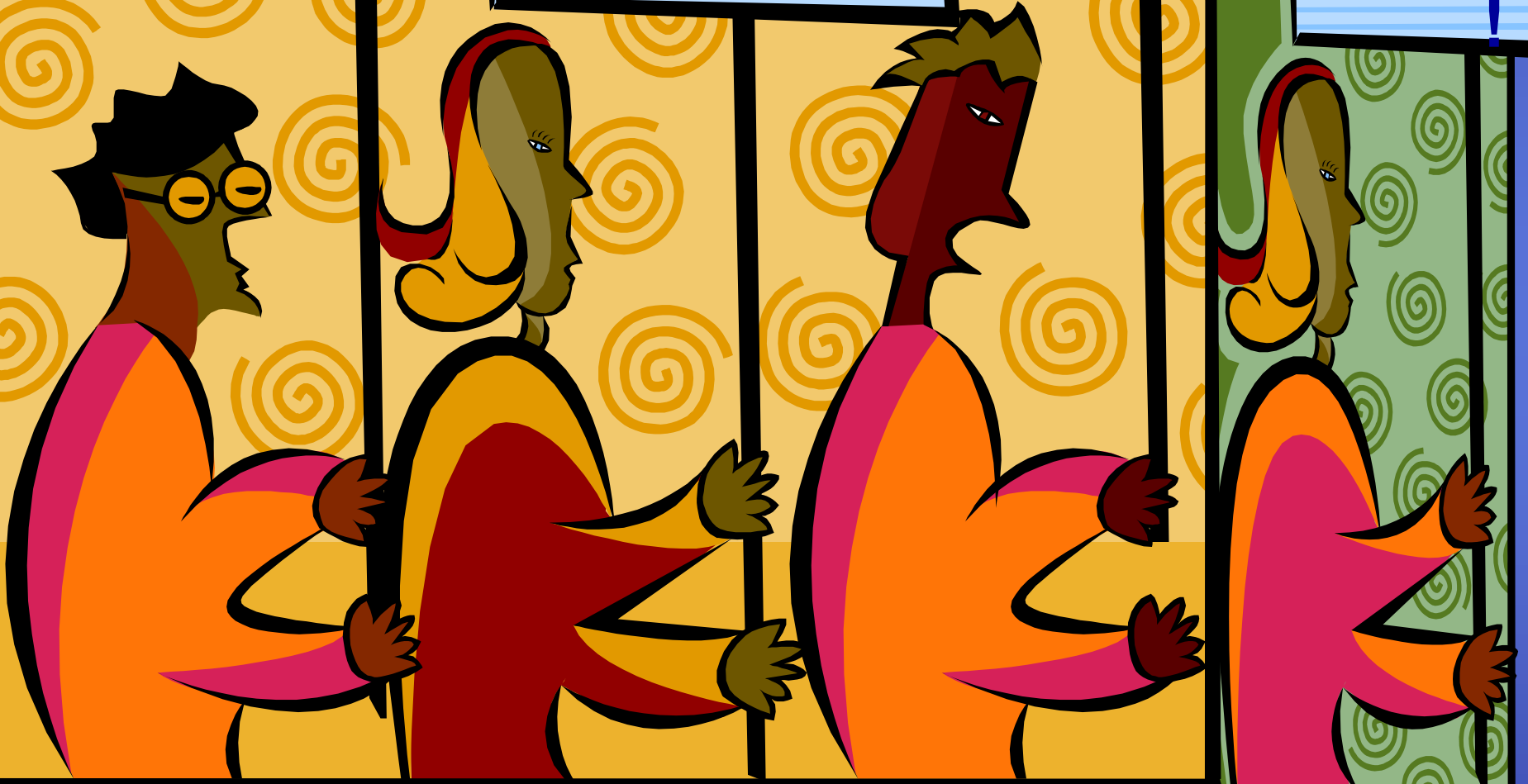
RUTGERS  
University Behavioral  
Health Care

Power to be  
part of the  
decision!

Better Treatment  
For Our Children!

Services that  
meet needs!

We want  
Access  
!



It started with a movement...Side 2

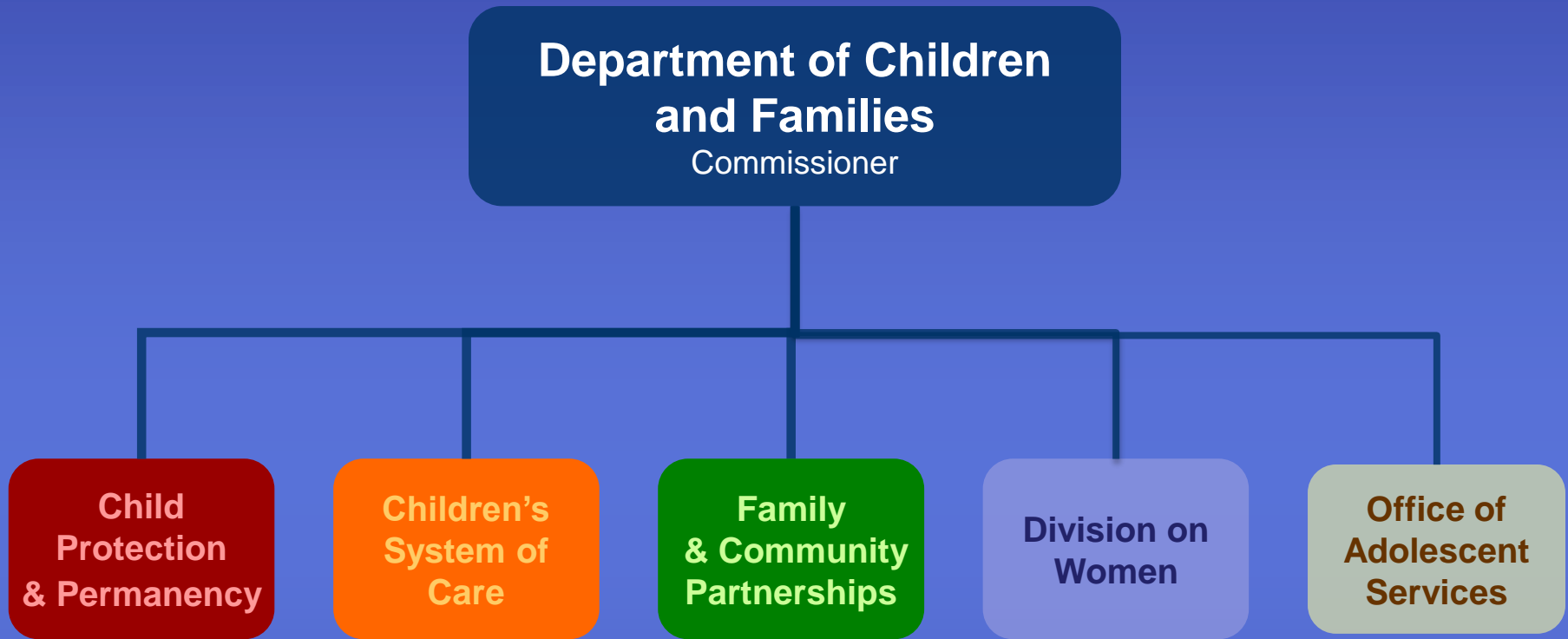
# ● Turned into a System of Care



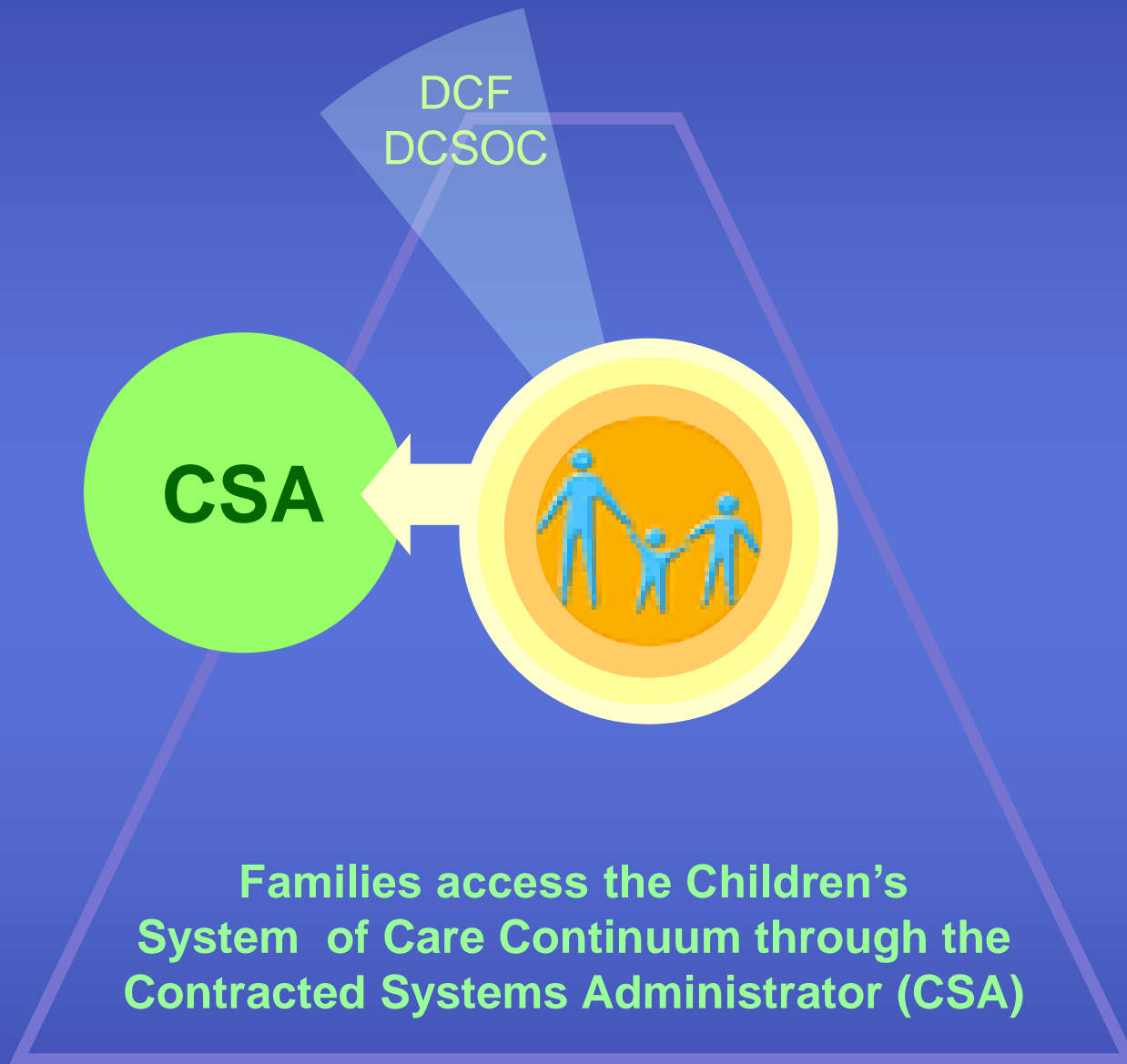
# ● Children's System of Care Values & Principles



# NJ Department of Children and Families



# ● The NJ Children's System of Care



# Local System of Care



# ● Children's System of Care Mission

Maintain and support youth with emotional and/or behavioral needs, developmental/intellectual disabilities, substance use disorders and their families in the community by



providing them with behavioral healthcare services appropriate to their needs, at the most appropriate level of care and for the most appropriate length of time, regardless of the family's income.





# The Wraparound Process is as simple as people helping people



# ● Children's System of Care Values & Principles

## Wraparound



# Accessing Services via the CSA

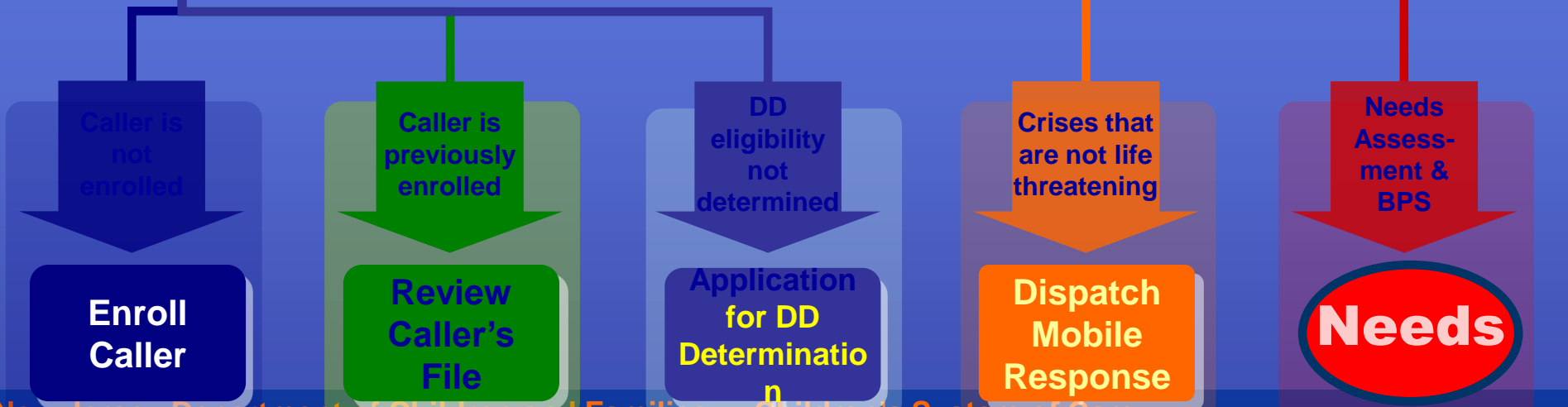


**PerformCare**  
1-877-652-7624

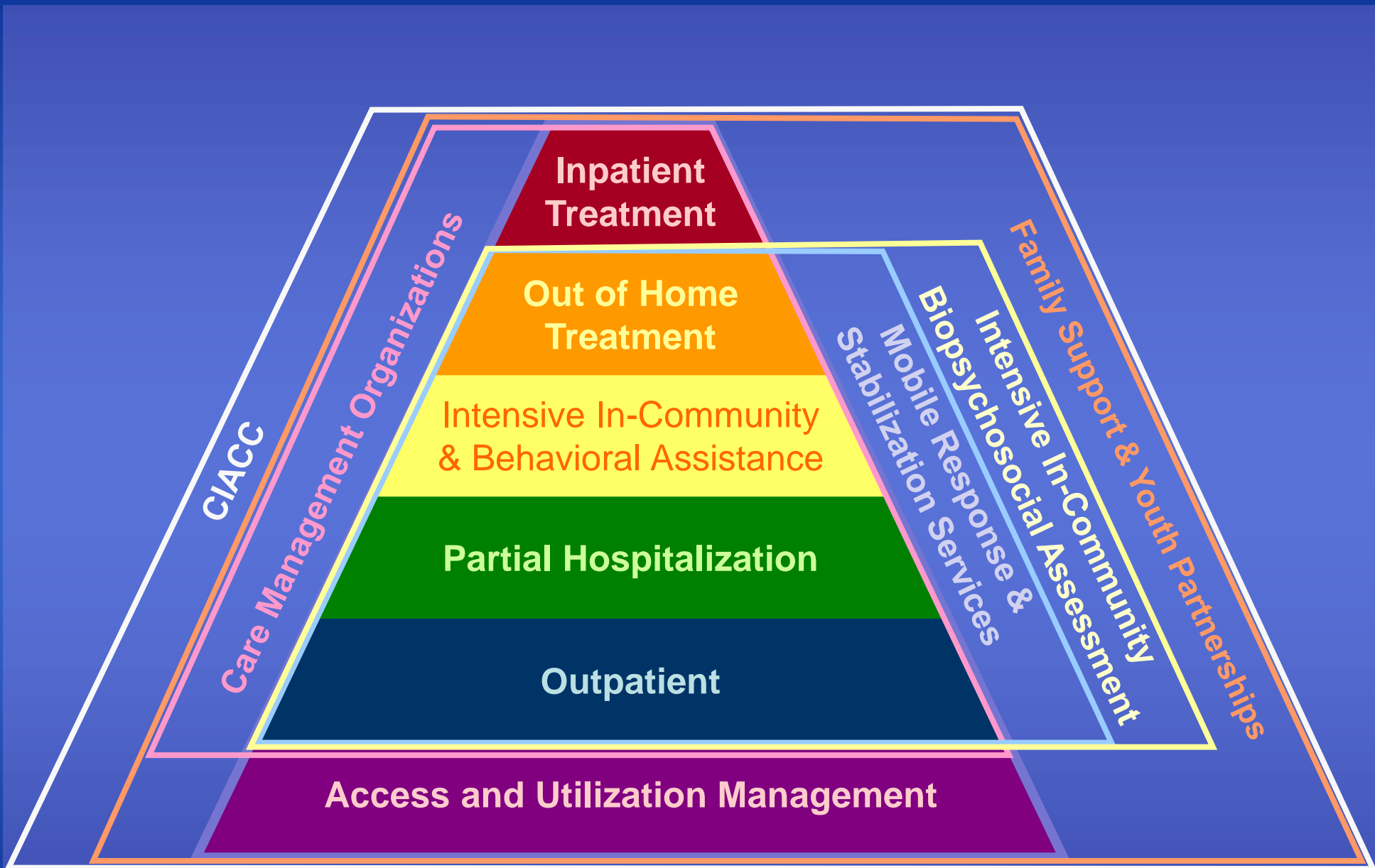


**Customer Service Representative**

**Care Coordinator**



# ● The Children's System of Care Continuum



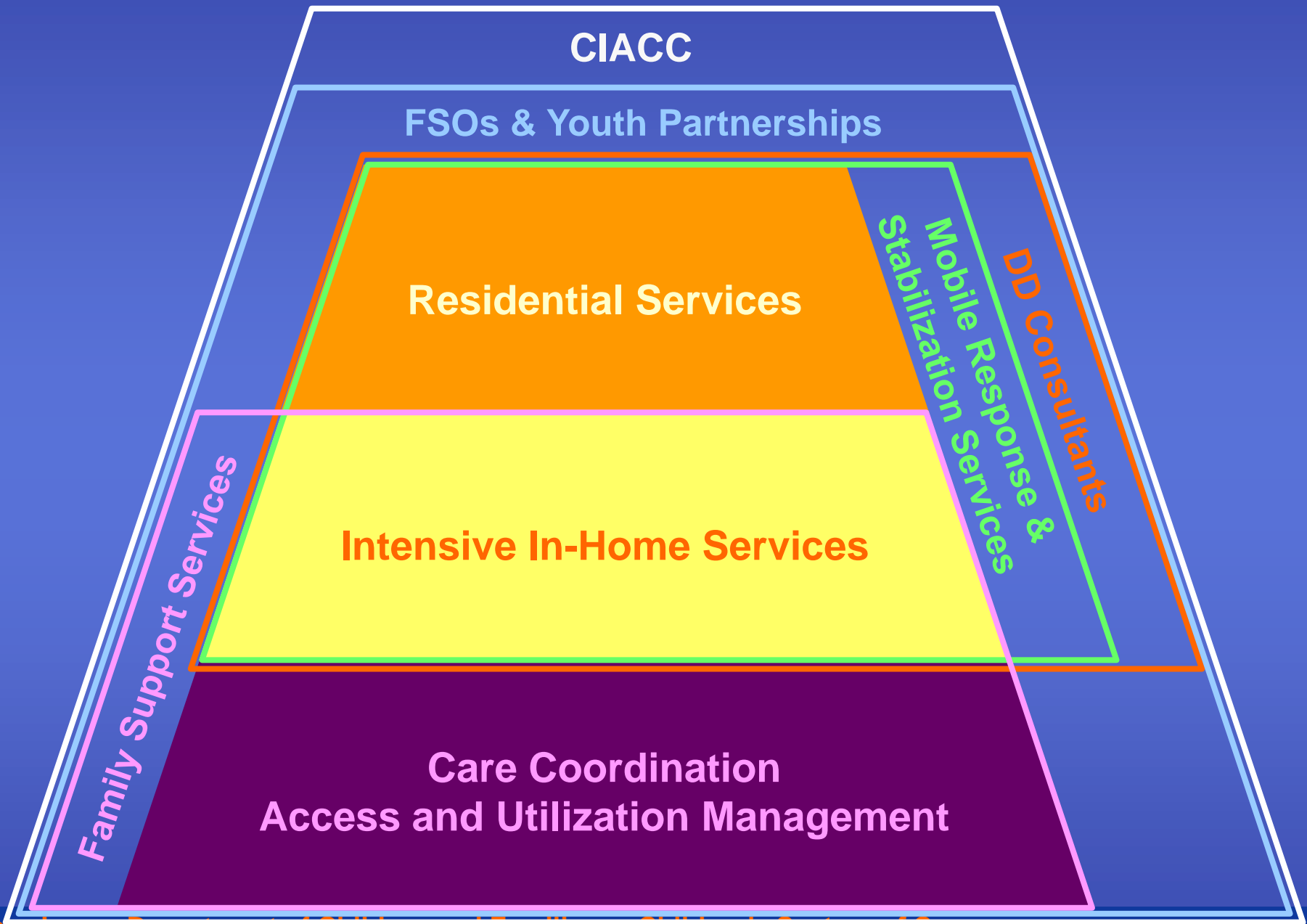
# Care Management Organization

- Provides Care Management to children & youth with moderate to severe need
- Utilizes the Child Family Team approach
- Address all life domains
- Family friendly language
- Assessment using IMDS Tools:
  - Needs to access
  - SNA for continued stay/ transition

# Mobile Response & Stabilization Service

- 24-7 In-home crisis response
- One hour response time
- Family determines the crisis
- Provides de-escalation, stabilization, and referral
- Utilizes the Crisis Assessment Tool
- Provides stabilization support up to 8 weeks

# CSOC Continuum for Youth with only DD



# ● Children's System of Care Outcomes



## At Home

With their families and not in out-of-home treatment settings



## In School

In their regular school in their school district



## In the Community

Successfully participating in the community and becoming independent , productive, and law-abiding citizens



# Children's System of Care Standard Assessments

	<b>Crisis Assessment Tool (CAT)</b>	<b>Needs Assessment + BPS</b>	<b>Needs Assessment (Needs)</b>	<b>Strengths &amp; Needs (SNA)</b>
<b>USER</b>	<b>MRSS</b>	<b>IIC Clinicians</b>	<b>CCIS, MST, FFT PHP</b>	<b>CMO, OOH Providers</b>
<b>PURPOSE</b>	<b>Crisis Planning &amp; Intensity of Service Determination</b>	<b>Intensity of Service Determination &amp; Treatment Planning</b>	<b>Intensity of Service Determination &amp; Prior Authorization</b>	<b>Intensity of Service Determination Ongoing Child &amp; Family Team Planning Continued Stay Justification</b>